



LEADING FINE-PITCH LED VIDEO WALL

E-Poster Series User Manual



18 Bit+ Image Processing



Wide Viewing Angle



Auto Calibration Module



Perfect Structure Design

Table of Contents

Safety Information	02-03
Product Introduction	04
E-Poster Series	04
Product Specifications.....	06
Product Installation	08
Tool Preparation	08
Installation	09-11
Operation System Guide	12-41

Safety Information



WARNING!

Please read the Safety Measures listed in this section carefully before installing, switching on, operating and maintenance of this product.

The following marks on the product and in this manual indicate important safety measures.



WARNING!
Safety Risk!
Might cause
equipment damage
Or safety risk.



WARNING!
Please read the
manual before
operating.



WARNING!
Dangerous Voltage!
Might cause
equipment damage
or electric shock.



WARNING!
Hot Surface!
Do not touch.



WARNING!
Flammable!



WARNING!
Possible damage
to eyes.



WARNING: Be sure to understand and follow all safety guidelines, safety instructions, warnings and precautions listed in this manual.

This product is for professionals use only!

This product may result in serious injury or death due to fire hazard, electric shock or on dropping.



Please read this manual carefully before installing, powering up, operating and maintenance of this product.

Follow safety instructions in this manual and on the product. If you have any questions, please seek help from EZ LED Visual.



Beware of Electric Shock!

- To prevent electric shock the device must be properly grounded during installation. Do not ignore using the grounding plug, or else there is a risk of electric shock.
- During a lightning storm, please disconnect the device's power supply, or provide other suitable lightning protection. If the equipment is not in use for a long time, please unplug the power cord.
- When performing any installation or maintenance work (e.g. removing the fuses, etc.,) make sure to turn off the master switch.
- Disconnect AC power when the product is not in use, or before disassembling, or installing the product.
- The AC power used in this product must comply with local building and electrical codes, and should be equipped with overload and ground fault protection.
- The main power switch should be installed at a location near the product and should be clearly visible and easily reached. This way in case of any failure the power can be promptly disconnected.
- Before using this product check all electrical distribution equipment, cables and all connected devices, and make sure all meet current requirements.
- Use appropriate power cords. Please select the appropriate power cord according to the required power and current capacity, and ensure the power cord is not damaged, aged or wet. If any overheating occurs, replace power cord immediately.
- For any other questions, please consult a professional.



Beware of Fire!

- Use a circuit breaker or fuse protection to avoid fire caused by power supply cables overloading.
- Maintain good ventilation around the display screen, controller, power supply and other devices, and keep a minimum 0.1 meter gap with other objects.
- Do not stick or hang anything on the screen.
- Do not modify the product, do not add or remove parts.
- Do not use the product in case ambient temperature is over 40°C.



Beware of Injury!



- Warning: Wear a helmet to avoid injury.
- Ensure any structures used to support, fix and connect the equipment can withstand at least 10 times the weight of all the equipment.
- When stacking products, please hold products firmly to prevent tipping or falling.
- Ensure all components and steel frames are securely installed.
- When installing, repairing, or moving the product, ensure the working area is free of obstacles, and ensure the working platform is securely and stably fixed.
- In the absence of proper eye protection, please do not look directly at the lit screen from within a 1 meter distance.
- Do not use any optical devices that have converging functions to look at the screen to avoid burning the eyes.



WARNING: Beware of suspended loads.



LED lamps used in the module are sensitive and can be damaged by ESD (electrostatic discharge). To prevent damage to LED lamps, do not touch when the device is running or switched off.



WARNING: The manufacturer shall not bear any responsibility for any incorrect, inappropriate, irresponsible or unsafe system installation.



Product Disposal

- Any component that has a recycling bin label can be recycled.
- For more information on collecting, reusing and recycling, please contact the local or regional waste management unit.
- Please contact us directly for detailed environmental performance information.

Product Introduction

About E-Poster Series

E-Poster is an AIO direct view LED display product with a built-in OS. It provides a user-friendly way to address today's need for LED direct view digital signages with simple deployment and easy operation.

E-Poster's standardized design and versatile accessories enable people to deploy this product to any place with an ease. Users can operate it in a simple way via mobile APP or through WLAN. Its in-built Android-based system allows people to play any content on the screen and play them in multiple windows. And the users can easily interact with this display via their Windows/IOS/Android smart phones, tablet pcs, laptops, and PCs.

All these functionalities make E-Poster a great fit for applications like shopping malls, department stores, corporate lobbies, hotel lobbies, retail stores, public transportation hubs, banks, churches, airports, museums, etc.





Product Specifications

Specification	Detail			
Product Name	E-Poster 1.7mm	E-Poster 2mm	E-Poster 2.5mm	ETV 2.5mm Semi-Outdoor
Pixel Pitch	1.75mm	2mm	2.5mm	2.5mm
Display Resolution(W*H)	320*1080	256*864	216*738	216*738
Pixels Per Display	345,600	221,184	159,408	159,408
Maximum Power (watts)	500	400	400	500
Typical Power (watts)	150	120	120	150
Line Voltage	100-240V AC	100-240V AC	100-240V AC	100-240V AC
Brightness (nits)	1000 nits	1000 nits	1000 nits	3500 nits
Contrast Ratio	6,000:1	6,000:1	6,000:1	6,000:1
Color Uniformity	>98.5%	>98.5%	>98.5%	>98.5%
Color Gamut	100% NTSC	100% NTSC	100% NTSC	100% NTSC
LED Refresh Rate	3,840 Hz	3,840 Hz	3,840 Hz	3,840 Hz
Color Temperature (k)	3,000-10,000	3,000-10,000	3,000-10,000	3,000-10,000
Viewing Angle (H/V)	160°/160°	160°/160°	160°/160°	160°/160°
LED Lifetime: Typical	100,000 hrs	100,000 hrs	100,000 hrs	100,000 hrs
Protection	IP34	IP34	IP34	IP34
Acoustic Noise	Fanless	Fanless	Fanless	Fanless
Operating Temperature	-20° to 40° C	-20° to 40° C	-20° to 40° C	-20° to 40° C
Storage Temperature	-20° to 60° C	-20° to 60° C	-20° to 60° C	-20° to 60° C

Product Installation

Tool Preparation



Allen Wrench Set



Screwdriver Set

Installation



Straight-Up Mode:
By default, the product will be shipped in this mode. Simply take the E-Poster out of the case and put it on the ground in this position. Connect the power cable. You are ready to go.



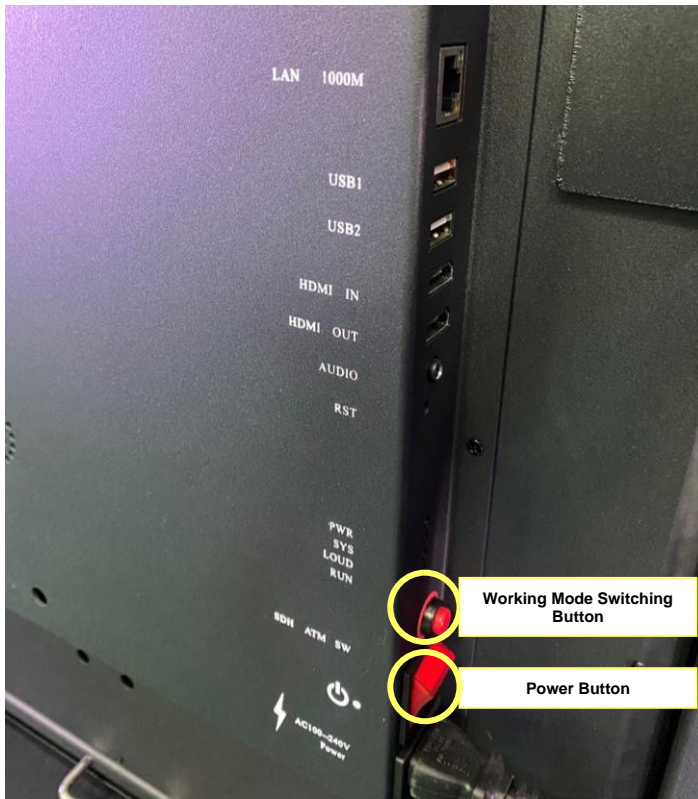
Lean-Back Mode:
If you would like to set the E-Poster to this mode. Use an allen wrench to take off the straight floor-standing support plate, then pull the lean-back support frame out and set the poster to a stable position.

First Use

1 Choose the right software working mode

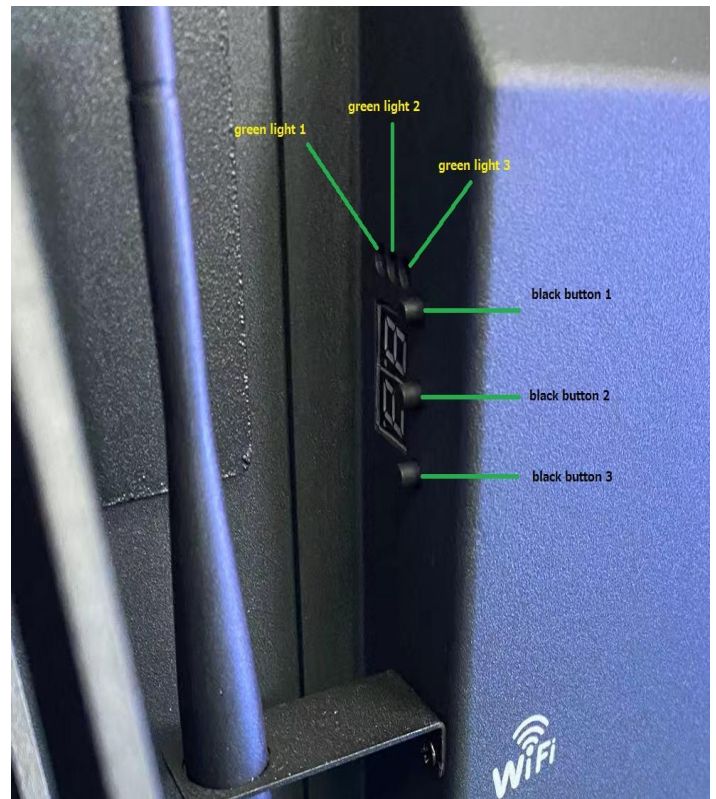
For the first-time use of the E-Poster, you need to choose the correct software working mode.

There are two software working modes on the E-Poster, the Async Mode and the Sync Mode. In the Async Mode, the user can upload video content to the in-built storage (8GB) of the E-Poster and set a play list and play schedule to run the content. In the Sync Mode, the E-Poster is used as one normal LED video panel that takes direct video sources from other devices via HDMI cables. The Sync Mode is often used when people want to splice multiple E-Posters together to form a big LED video wall. To switch the software working mode, we need to click the red button on the right side of the back power box. Please see pictures below. A double-click on the red button would switch the machine to the Sync Mode, a single click would switch it back to the Async Mode. When it's at Sync Mode, the green light on the receiving card flashes very fast. When it's Async Mode, the green light flashes twice in one sec (see the right picture). The machine's default setting is Async Mode, which means normally you don't need to switch the mode when you turn it on the first time.



2 Back Power Box Introduction

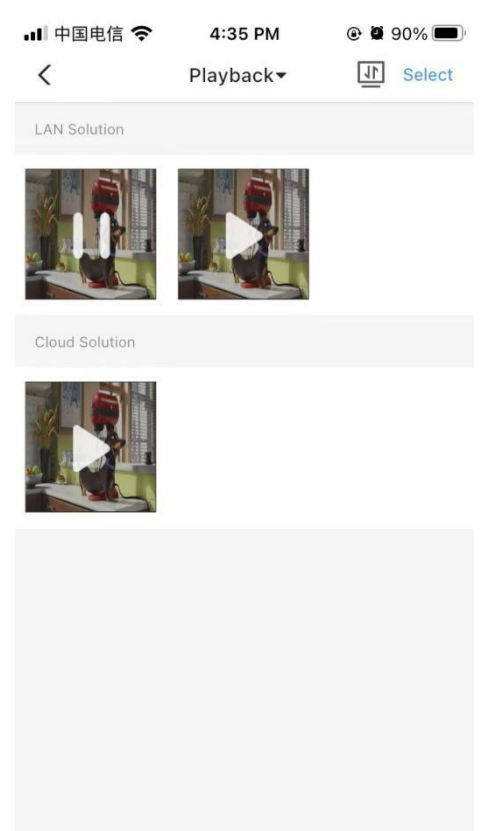
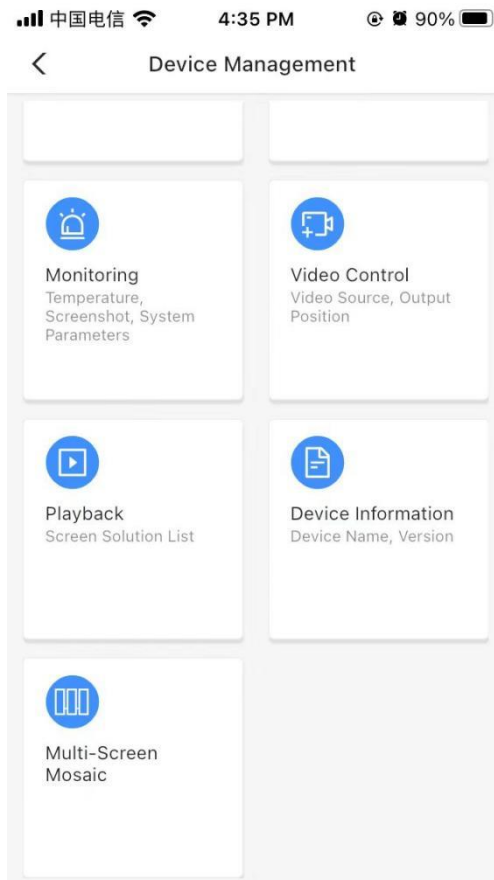
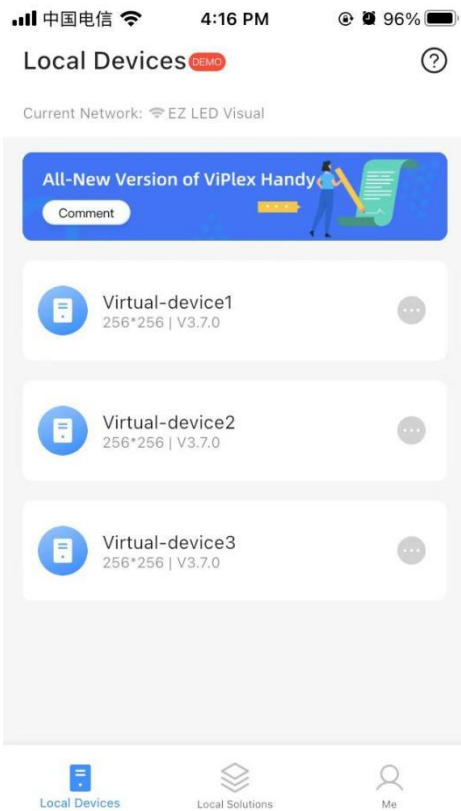
Here are some explanations on the functions of the ports and buttons on the back power box. On the right top is the RJ45 port used for connecting the E-Poster to the PC when we need to do the technical configuration of the machine via a PC. Following the RJ45 are two USB ports. They can be used to feed picture or video contents to the E-Poster. Right below the USB ports are one HDMI IN and one HDMI OUT ports, they are used to daisy chain several E-Posters together to form a larger LED video wall. So they can only be used when you set the E-Poster to the Sync Mode. Then below the HDMI port is an Audio Out port used to connect external speakers. Below the Audio Out port are the working mode switching button and power button that we've already explained in the first paragraph. On the left side of the back power box is a configuration setting area formed by three indication lights, a small monitor and three black buttons. The buttons are used to switch between different settings and adjust the value of each setting. The three green indication lights represent three settings. The monitor shows the value of that setting. By clicking Black Button 3 you can switching among the three lights. By clicking Black button 1 and Black Button 2 you can change the number on the Monitor (plus+ and minus-). Green Light 1 and Green Light 3 are used for splicing panels in Sync Mode. When switching to Green Light 1, you can set the total quantity of the E-Posters being daisy chained to be a big LED video wall. When switching to Green Light 3, you can set the sequence number of this E-Poster in the daisy chain. When switching to Green Light 2, you can adjust the brightness of this E-Poster.



Operation System Guide

1 Mobile App Control

Download **ViPlex Handy** app on an iOS/Android cellphone or tablet with WIFI function. Turn on the E-Poster and make sure it's on Async Mode. Then open the WIFI selection on the phone/tablet. Then you can find the WIFI of the E-Poster in the WIFI list. The name of the WIFI can be find on a label on the back power box. The WIFI password is 12345678. Click to connect the E-Poster's WIFI. When it's done, open the ViPlex Handy app on your phone/tablet. Find your E-Poster in the Local Device panel and then click to connect the E-Poster. Then you can upload your content in the Local Solution panel and manage your content in the Playback window in Device Management. In Local Solution, you can set multiple play windows on the screen and play different video contents in those windows.



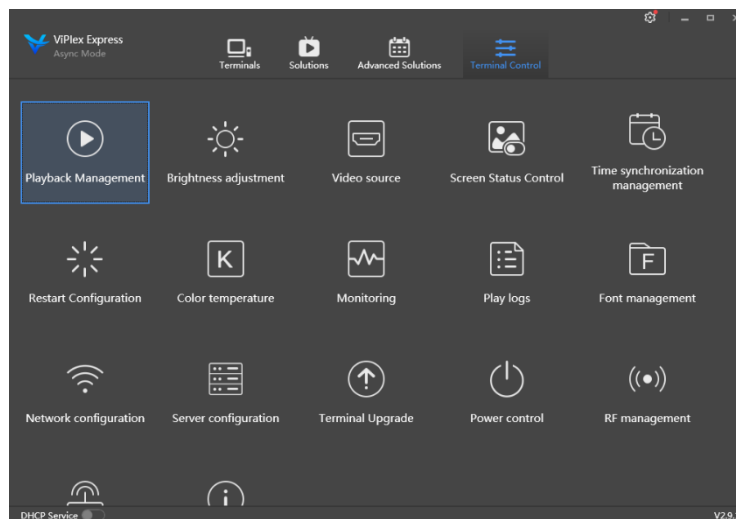
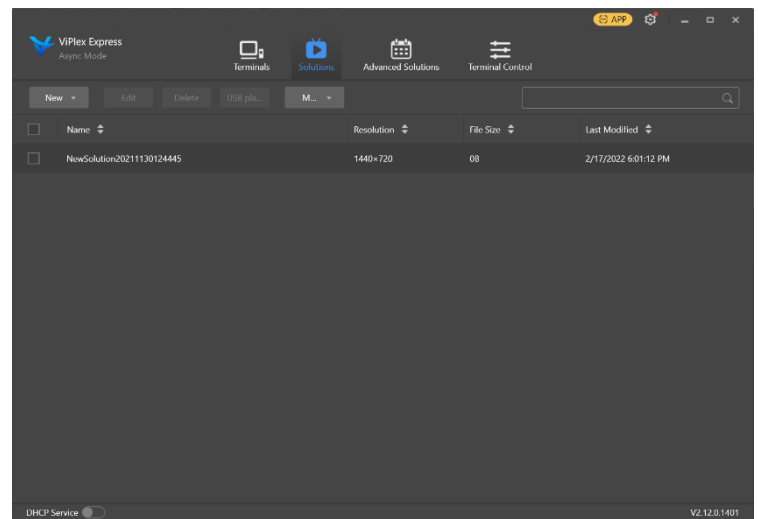
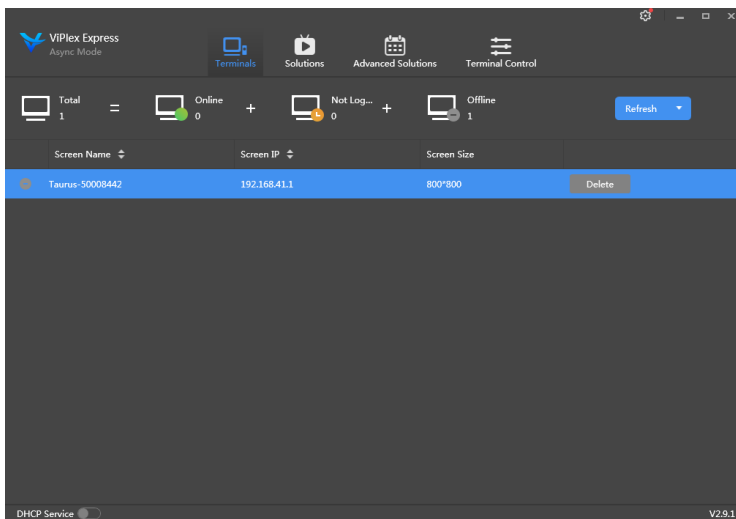
2 Computer Software Control

Download **ViPlex Express** on a Windows computer from the links below:

For Windows x64 [https://oss.novastar.tech/ViPlex%20Express%20V2.13.0.1001%20Setup\(X64\).zip](https://oss.novastar.tech/ViPlex%20Express%20V2.13.0.1001%20Setup(X64).zip)

For Windows x32 <https://oss.novastar.tech/ViPlex%20Express%20V2.13.0.1001%20Setup.exe>

Turn on the E-Poster and make sure it's on Async Mode. Then open the WIFI selection on the computer. Then you can find the WIFI of the E-Poster in the WIFI list. The name of the WIFI can be find on a label on the back power box. The WIFI password is 12345678. Click to connect the E-Poster's WIFI. When it's done, open the ViPlex Express software on your computer. Find your E-Poster in the Terminal panel and then click to connect the E-Poster. Then you can upload your content in the Solution panel and manage your content in the Playback Management in the Terminal Control panel. In the Solution panel, you can set multiple play windows on the screen and manage your content in those windows.



V1.2 Jan 2021

All rights reserved by EZ LED Visual Co., Ltd.
EZ LED Visual Co., Ltd. reserves the rights to modify contents without any further notice.



EZ LED VISUAL CO., LTD.

Building E, Hongwan Business Center, Bao'an
District, Shenzhen 518101, P.R.China

T: +86 755-2322-8572 info@ezledvisual.com

F: +86 755-2322-8573 www.ezledvisual.com